

# ANNUAL REPORT OF JLKP

2016-17



ADDRESS – Sindhipara Pakur

Near – Quarry association office Pakur

AT+Post- Pakur, Pin-816107

(JHARKHAND)

PHONE- 06435220568,221288,221286

Mobi- 9431158447,9955148041

E-mail- [janlok\\_pkr@yahoo.com](mailto:janlok_pkr@yahoo.com)

Web-[www.jlkp.org.in](http://www.jlkp.org.in)

## Forward



We are very please to present you the annual report of Jan Lok kalyna Parishad for the year 2016-17 during this year we received support and cooperation form various government department non government sectors and local people women group members yourt clubs Adolescent of our area as well as the government organization like DRDA, ITDA, PHED, JSWB, CSWB,CIF Childline india Foundation and other national and International Funding Agency etc. it is for without their support the activities of this financial year would never have been completed .

We arte also very please to report success of various Livelihood programme in Pakur district .Distributed goat among the tribal community help of Integrated Tribal Development Agency and District welfare department as well as PRI members , Gram shabha ,villagers, volunteers , SHG leaders, Youth club , adolescent clubs etc .

Vinod Kumar Pramnik  
Secretary  
Jan Lok Klayan Parishad ( JLKP)



**ANNUAL REPORT 2016-2017**

## Introduction of the organization.

**In** 1989 two young persons from Ialmati Taljhari village in Shahibganj district, name- Vinod Kumar Pramanik and Mr. Sivcharn Uranw formed a club by the help of other villagers and youth name NEHRU UVA CLUB. The main objective of this club was to guide the youths specially tribals living below poverty line about their rights and obligations.

**Jan Lok Kalyan Parishad** is a non-profit organization in Santhala Pargana region of Jharkhand. The organization is involved in the development activities since the year 1993 with the marginalized and disadvantaged sections of society particularly the women and children from poor socio-economic background. The organization particularly works in the field of community mobilization, natural resource management, education, community health, women & child protection, livelihood and advocacy issues. The organization's concern and major focus is on child development & protection, livelihood promotion & sustainable livelihood through the effective use of natural resources management. The major intervention of the organization is in the field of Child development & protection, livelihood promotion, education and women and youth empowerment for the economically backward and marginalized community. The community mobilization process of Jan Lok Kalyan Parishad at developing livelihood condition and people's initiative on many cross-cutting issues like gender discrimination, livelihood, education, in a rights-based approach.

Jan Lok Kalyan Parishad is a grass root level organization which focuses on community based initiatives. Sustainable livelihood and other income generation activities as per need of Santhala Pargana Adivasi region. The people are provided a better life and better living standard, through community involvement and training programmes.



## Vision ,Mission and Guiding Principle

### Vision

Holistic development of treble community focus on women and children .

### Mission

To establish and sustain a trained conscious healthy as well as organized, self-dependent society and sustainable livelihood through science and technology,

### Guiding Principle

- Protected of child rights and Development of skill all child in the entire target area.
- To reduce poverty in the entire working area.
- To reduce gender gaps in literacy of all targeted area .
- To increase women participation in Gram Sabha and contribution in planning for the village development activity.
- To reduce MMR & IMR.
- To generate awareness of community health. (Santation & safe drinking water.)
- To established a net work among Gram sabha/CSO,SHGs, youth clube and Govt,Department and other development actors.
- 



## Children Home

In this year(2016-17) we started a new project namely Child Shelter Home for CNCP child by the support from department of women and child development and social security, under Jharkhand government . In this project we are able to give sufficient opportunity the respective child for shelter and all right of a child . In this shelter home total 50 boys seat's is available in pakur district .In this shelter home the child belongs from santhal, adivasi, PTG's group .Currently in our shelter home 16 children and we are regularly doing a programme to extract knowledge related to this which help the child and their family for better life , and also help them to know about their rights.

The organization is felling very proud and glad to work on this type project which helps the children as well as father mother of the child.

The organization provide's all the recurement and need of a child which of under the age of 0-18 years , by the help of government .

## Fish Farming Programme (Livelihood)

In this project Jlkp found a great opportunity to trained the 300 farmers of Borio block in sahibganj district under banbandhu yojna through ITDA Sahibganj , under this project total 300 numbers of farmers are trained for fish farming.

The organization is working on the selected17 panchayat in Borio block by selecting the 300 farmer working on fishery and trained them by skill development programme to increase their income through which they can come out from BPL Zone and make their entrance into the APL zone



## Family Counselling Centre

This is a continuous programme of jan lok kalyn parishad in this programme we are able to give opportunity to family to live happy life with their family member's .JLKP also supports the trafficked women by the help of counselling and also motivate them to live with their families. The central Social welfare Board in co-operation with the State Social Welfare Board Organized Family Counselling Centre in every state through different voluntary organizations. The main objective of the centre is to prevent family break down and to decrease the matrimonial cases in court.

The Family Counselling Centre started at our organization from 2003 with an aspiration that is to really more on counselling, goodwill, understanding and negotiation.

During this year eighty nine (89) cases have been registered and 6 pending cases from previous year have been dealt with in this period .Pending cases of previous cases have been closed & settled

### A. Distribution of cases according to the nature of problem

Sl.No	Causes of Problem	No. of cases
1	Maladjustment between Husband & wife.	17
2	Maladjustment between Husband ,wife. & other member.	11
3	Extra marital relation of male/female	14
4	Second Marriage	1
5	Maintains	9
6	Alcohol/drug addiction	17
7	Got married on own choice	0
8	Desertion-male/female	0
9	l-treated by husband.	22
10	Psychological	1
11	Property related	7
12	Child marriage	0
13	Dowry Demand	6
<b>Total</b>		<b>105</b>



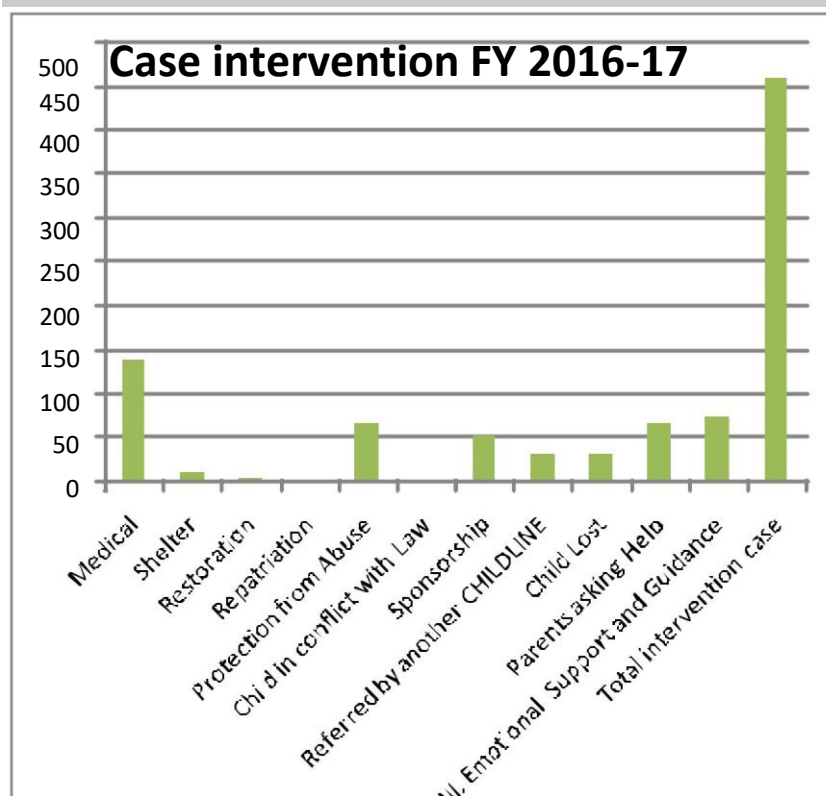
## CHILDLINE 1098

This is a continuation programme of Jan Lok Kalyan Parishad, CHILDLINE is a national, 24-hour, free, emergency phone and out reach service for children in need care and protection. Initiated in 1996 as pilot project in Mumbai, CHILDLINE is currently operational in 366 cities across 34 states/UTs in India.

CHILDLINE reaches out to the most marginalized children with the aim of providing them rehabilitation and care from unsafe situations. CHILDLINE provides relief and rehabilitation in the form of shelter, medical aid, repatriation, rescue, emotional support and guidance etc.

CHILDLINE Project across India is supported by the Union Ministry of Women and Child Development (MWCD) under the integrated child protection scheme.

CHILDLINE Pakur is a rural model having seven partner organizations working in the district. It started functioning in February 2011 with one nodal organization, one collaborative organization and six sub-centres. Since its inception, CHILDLINE Pakur played a very remarkable role in every aspect, where it responds to every child who dials 1098 and provides emergency assistance through intervention and long term follow up.



## CASE INTERVENTION IN FY 2016-2017

Categories	Financial Year 2016-17
<b>I. Intervention</b>	
Medical	145
Shelter	10
Restoration	4
Repatriation	
Protection from Abuse	85
Child in conflict with Law	1
Sponsorship	63
Referred by another CHILDLINE	42
<b>II. Missing Children</b>	
Child Lost	39
Parents asking Help	78
<b>III. Emotional Support and Guidance</b>	81
<b>Total intervention case</b>	548





During the six year Pakur Childline Intervention 460 cases in different category like as Medical 173 ,Shelter 15,Restoratiopn 2,Protection from abuse 66, Child in conflict with law 0,Sponsorship 71 Referred by another CHILDLINE 29, Missing 106 (child lost 37& Parent asking help 69) & Emotional Support & guidance 622.

Case intervened by CHILDLINE Pakur :- Chiildlin aims at protecting the rights of children and ensuring access to quality service to poorest of the poor children. Keeping this in view, child-line Pakur has been render quality service to children calling 1098 for mental help, repatriation, death related, emotional support and guidance, protection from abuse and sponsorship.

**O** Children are also involved in evaluating the CHILDLINE service through Open Houses. It is a platform for children to express opinions, give suggestions, address conflicts and give feedbacks, Open House serves as a means for children to assess, review and evaluate CHILDLINE. This open, uninhibited interaction allows the CHILDLINE team along with the children to identify solutions to problems. Thus giving children the authority to judge a situation and decide a ver-

**S** dict or determine a course of action in relation to a problem. E It also serves as an opportunity to share the positive encounters between children and functionaries of the allied systems, like the police, health personnel etc, who otherwise traditionally share a relationship of mistrust. This helps not only in giving insights for improving the service, but also in building a relationship of trust with the children.

During the Financial Year 2016-17 CHILDLINE Pakur has conducted 60 Open House Programmes. CHILDLINE has also ensured participation of PRI members in these programmes through formal invitation.

Besides ,a platform was provided to the children whereby they shared about their life situation for sharing .Moral values were also inculcated during the open house being conducted .Most of these open house concluded with games ,songs recreational





During the period from April 2016 to March 2017 the team devoted more than 6500 hours outreach and awareness to different localities and areas targeting market places ,taxi stands ,slums ,PCOs ,individual ,shop ,bank ,police station etc sensitizing the masses about CHILDLINE and the services rendered by it through the number 1098.

As a part of awareness programme, poster campaign on child trafficking was carried out in all the police station on Pakur District thereby sensitizing the police personnel about the prevalence of child trafficking in the state and collaborative effort required to address the menace .

trafficking, Films screening on child trafficking was also carried out in many of the educational institutions in Pakur District. While poster campaign on the same was carried out all 75% school. Poster campaign on child trafficking was also carried out in the public place

Apart from this, skits were developed based on child labour, domestic work and child trafficking which were performed in a number of schools as well as in public places.

The skits were based on child labor and trafficking issues which happened to be the most important and burning subject at the moment .The teachers as well as the student appreciated the skit performed and very well received the message that was intended to pass to them .The principle of the school too gave impressive feedbacks which are recorded in the reports.

The skit were performed various place such SDO, Court office campus, Bus Stand, Taxi Stand ,Auto Stand ,& Railway Stand. During April 2016 to March 2017.

Beside these other activities that were carried out as a part of childline 1098 awareness include one to one awareness ,community awareness ,and awareness in banks ,ward lake ,orientation to the school teachers , community leaders ,headmen and other pressure groups.

## COMMUNITY HEALTH PROGRAMME

Jan Lok Kalyan Parishad one of major work is community health ,last three year we conducted a special drive on Littipara block for reduce Maternal Mortality Rate (MMR) & Infant Mortality Rate (IMR) help of SHAMVI Netherlands (Funding agencies)

Due to reduce MMR & IMR we conducted Model VHND , mass awareness like ,mother meeting, father meeting ,sahya meeting ,ICDS meeting, National & International day celebration, strong advocacy with allied system across ,supervision of Health sub center .

Our well effort significantly reduce MMR &IMR .As well as change Littipara health scenario.



## PREGNANT WOMEN

86% women perceived that the nearest VHND.  
 94% pregnant women had received antenatal check-ups at VHND.  
 65% women had received antenatal check-ups at VHND.  
 45% pregnant women had received IFA tablets.  
 94% pregnant women had received Inj.Tetanus Toxoid tablets.  
 90% pregnant women had knowledge regarding Janani Suraksha Yojna.  
 93% pregnant women were aware about birth preparedness while guidance and referral along with birth preparedness to



## MOTHERS OF CHILDREN UNDER FIVE

99% of mother were aware that breast feeding must be initiated within one hour after birth and 995 of those aware mothers had initiated breast feeding within one hour after child birth.  
 A significant 95% mothers were aware that exclusive breastfeeding should be done till 6 month age and this practice was followed by 93% of those aware mother.  
 96% mother were aware about initiating complementary feeding from 6 month .  
 75% mother were aware that ORS + Zinc needs to be given to a child having diarrhoea .80% were aware that ORS+Zinc was available with Saihaya .



## ANIMAL CARE PROGRAMME

Live stock management is the traditional and one the important sources of livelihood of the rural tribal community of Jharkhand .Agriculture practice and live stock rearing goes to side by side .The aim of the organization for the livestock rearing is to increase the overall income diseases and other common diseases in lack of proper knowledge of veterinary care service.

Under the Integrated Tribal Development Agencies of Jan Lok Kalyan Parishad goat rearing programme has been covered 6 village at Pakur block,in Pakur District .

Under Social welfare Department of Jan Lok Kalyan Parishad goat rearing programme has been covered 6 village at Amrapara block in Pakur district.

### Specific Objective.

Poverty alleviation through livestock management.  
 Improved health status.  
 Increased assets base.  
 Women 's empowerment.

Animal care programme in a Table

Sl.no	Block	No.Village Coverd	No Beneficiaries	Supported unit
1	Pakur	6	36	180
2	Amrapara	6	15	75
Total		12	51	255



## HEALTH & HYGIENE

Individual Health and hygiene is largely dependent on adequate availability of drinking water and proper sanitation. There is, therefore, a direct relationship between water, sanitation and health. Consumption of unsafe drinking water, improper disposal of human excreta, improper environmental sanitation and lack of personal and food hygiene have been major causes of many diseases in developing countries. India is no exception to this. Government started the Central Rural Sanitation Programme (CRSP) in 1986 primarily with the objective of improving the quality of life of the rural people and also to provide privacy and dignity to women.

Jan Lok Kalyan Parishad help PHED & Gram Panchayat 's village water & sanitation committee of Pochathol Pakur Block & Ful-jhinjari ,Pakuriya Block of Pakur district made 76 eco friendly sanitation .

Simultaneously we distribute IEC material & awrness the rural people on personal health & hygiene .



## CRECHE AT KORAPARA,PAKUR

This is a continuation programme of Jan Lok Kalyan Parishad has established one Creche at Korapara,Pakur financed by the Central Social Welfare Board through Jharkhand Social Welfare Advisory Board .Creche keeps under its ,25 children in the age group of 6 month to 5 year both male & female children.

The Crèche provides to the children pre-school education trough action songs ,storytelling, games ,nature study ,making play – materials from mud etc.

Creche worker make home visit and group meeting with the mothers to make them aware about health and hygine ,communicable diseases,child rearing practices,family planning.the worker check the weight of the children every month and maintain growth charts and doctors are consulted whenever required.

□□□□ □ □□ □□□□□ □ □□□□|

□ □□ □□ □□□□ □□□ □□□||



## SPECIAL ACTIVITY

V  
E  
F  
G  
R  
M  
T  
C  
O  
M  
P  
O  
S  
T  
T  
R  
A  
I  
N  
I  
N  
G

This is the continuous programme and this is the final year of the project.

Vermi composting is the process by which worms are used to convert organic materials (usually wastes) into a humus-like material known as vermicompost. The goal is to process the material as quickly and efficiently as possible. These two processes are similar but different. If your goal is to produce vermicompost, you will want to have your maximum worm population density all of the time. If your goal is to produce worms, you will want to keep the population density low enough that reproductive rates are optimized.

Jan Lok Kalyan Parishad provide Vermi Compost training 20 young villager in this financial year, youth are well implemented in village. Few youth take it professional & earning 10,000 per month.



A  
D  
O  
L  
E

The Jan Lok Kalyan Parishad offers adolescent camp experience for youth ages 11-15\* in a safe atmosphere with a highly trained, fun and energetic staff. adolescent Camp offers leadership and service learning opportunities to keep adolescents engaged in meaningful activities during the summer months. Adolescent Camp is filled with fun and exciting events so you're adolescent won't feel like they are in a day camp but like they are hanging out with friends.

N  
T  
C  
A  
M  
P

The Leaders In Training Program is designed to give youth ages 14-17 years old an opportunity to gain positive workplace experience. Participants will receive training regarding how to work in a variety of different programs such as Day Camp, Child watch, Membership, Healthy Living, Aquatics and Youth Sports. Participants will complete an interview process, program training and weekly evaluations. A Caring Adult Mentor will provide support and guidance throughout the length of the program. This program requires a minimum of a 3 week (120 hour) commitment

Jan Lok Kalyan Parishad provide 15 adolescent camp & provide above subject training in a camp.





## SPECIAL ACTIVITY

T  
A  
I  
L  
O  
R  
I  
N  
G

### LIVELIHOOD PROMOTION PROGRAMME

This is the continuous programme runs by the organization by the contribution of organization on the demand of illiterate women's and girls .

JAN LOK KALYAN PARISHAD has structured its livelihood framework for improving employability of youths in the vicinity of the manufacturing locations of the community. The four domains of the training programs catering to the individual needs are Technical Literacy, Vocational Training, Life Skill Training and Subsistence Living Training.

JAN LOK KALYAN PARISHAD under livelihood frame-work provided tailoring skills to the SHG named Golap

Mahilla Samity having 11 women members at Littipara Village at Bara Sarsa location. With the infrastructure support from the Foundation the SHG started its own Uniform Stitching Centre.

Jubilant pioneered in providing work to the SHG by giving them the project of uniform stitching of its own employees. Subsequently, the other organizations in the nearby area also started getting their uniform stitched by them. At present there are 11 members in the group significantly contributing towards their net family income.



P  
R  
i  
d  
r  
i  
v  
e  
M  
A  
R  
Y  
c  
h  
i  
l  
d  
E  
D  
U  
C  
T  
I  
O  
N

### EDUCATIONAL DEVELOPMENT PROGRAMME

This year Jan Lok Kalyan Parishad conducted a special drop out girl child education, in 5 village

(Sonajori, Patrapara, Pochathol, Monglapara, Chachki & Fulpahari) of Pakur & Littipara Block .We selected all

drop out girl child in this village ,we counselling selected parents & child .At last we successfully readmission all child of 5 village child in her nearest school.

Same we distribution education basic material.



### COMMUNITY BASED ORGNIZATION

Promoting the habit of Solidarity

Making the community more relevant towards changing scenario .

Creating awareness on the right based issues.

Capacitate the community to develop in mode of sustainability .

Advocating the issues of farmers and labourers through the Majdoor Kisan Sangathan.

Jan Lok Kalyan Parishad arrange traning programme on above point with different SHG & kisan Club

S  
H  
G

## SPECIAL ACTIVITY

### AGRICULTURE EXTENSION & TRAINING PROGRAMME

R  
I  
C  
E  
I  
N  
T  
E  
N  
S  
I  
F  
I  
C  
A  
T  
I  
O  
N

Agriculture is the main source of income for the rural people. The organization has taken the initiative of providing irrigation facilities and capacities to the farmer on sustainable agriculture practice through small input. This year organization has also introduced the system of Rice intensification (SRI). The training and exposure visit was initially done by the farmers committee. 1 acre of land has been covered with the help of local farmer through SRI.



C  
O  
M  
P  
U  
T  
E  
R

### VOCATIONAL TRAINING

Every year Jan Lok Kalyan Parishad offers various types of vocational training. Financial year 2016-17 we offered computer training programme. Under this programme 10 village youth take this opportunity & will be literate about the computer. Few are using this knowledge in their professional life.



E  
H  
N  
O  
M  
E  
D  
I  
C  
I  
N  
E

### TRIBAL DEVELOPMENT

The ethnomedicine practices in both developing and developed countries are increasing. Homestead gardens and kitchens are connected with the food and eco-system based sustainable living. The loss of local tradition and associated knowledge system (Ethnomedicine) is resulting in poor health of mother and child specially among the tribal poor people. Recognition of native healers and the time-tested ethno medical practices are therefore important for mother and child care even in modern times. In this sense during this financial year Jan Lok Kalyan N Parishad arranged an Ethno medical practice training programme in Litti Para.





## SPECIAL EVENT

### CHILDLABOUR DAY CELEBRATION

#### CHILD LABOUR JAGRUKTA RATH

The Child labour Jagrukta Rath piled across the various areas of the Hiranpur & Pakur block .It provide necessary knowledge about Child labour such child labour act, spot fine compensation ,child labour school etc & distribution pamlet.

As the Jagrukta Rath was moving across two block every village ,It was being stopped in place where collective of people were found and the volunteers interacted with them ,During the interaction, mixed reactions came from villager. In many places, villager appreciated that by way of this Jagrukta Rath they are equipped with lot of information about Child Labour.

Our village label volunteers held discussions with local people in tola & Street. This in turn led to group discussion, which too disseminated information and build awareness among people about the child labour. Thus the Jagrukta Rath wherever volunteers went they captured the perception of people critical views and reaction.



#### COMPETITION & RALLY

##### Essay & Drawing competition:

We conducted essay & drawing competition in selected 6 school namely Gharjani Khustraba, Pakur Khus-traba, Hirandanga Purba ,Fars School, Harindanga High School & KKDM high school.

As same time we conducted awareness programme in this particular school.



##### Child Labour Awareness Rally .

Two panchayat we conducted rally one Gharjani & another Farsa. Villager & Village children the participate the rally .We use placated, Poster, Sologan & Pamlet in this rally. Rally moved across the village .Villager are come out & participate in rally .Villager share knowledge with our team member .





## WOMEN DAY CELEBRATION

International women day celebrated on 8th March in the filed office of Jan Lok Kalyan Parishad to provide a common platform for women to voice their thoughts protect discrimination and violence. The occasion provided the space where women showed their collective strength and demanded equal status in the society. The occasion helped them to share their experiences in running their SHGs and how through the collective efforts they can overcome the constraints.

200 women different SHG of our working area part in this gathering. The enthusiasm among them was inspiring. Most of them came by walking by 4-5 kilometre in the scorching heat there was no sign of tiredness. A brief discussion was made with them on different development schemes mainly focusing Domestic violence and dowry prohibition act. The discussion helped to build a collective opinion on need for formation of women leadership.

A short rally organized the same day, objective of the rally was to sensitize the common villagers especially women by carrying the message of women's day to them. The initiatives would ensure a more gender sensitive society in coming days by not only empowering women but also changing the anachronistic mindset of the male dominated.



## CHILDREN DAY CELEBRATION

Children day celebration in India commemorate the birth anniversary of Pandit Jawaharal Nehru. The occasion is celebrated on 14th November every year with great splendor and grandeur. Nehru was extremely fond of young children. It is due to his love and passion that this day is marked as children Day.

CHILDLINE Pakur every year organize different cultural programme. Children participate in various activity such as Painting, drawing, story telling etc.

Excitement and enjoyment lies ahead for under privileged child. Our team member disguise themselves as children and present dramas for their beloved children. Children Day is all about




---

□ □□□□□ □□ □□ □□□□ □□□, □ □□□ □□□□□ □□□ □□ □□□.

---



## NET WORKING PARTNER



### Net working Mission For

**Constructing strategic framework within the like minded NGOs.**

**Common platform to exchange information, raise questions and express solidarity for common cause.**

**Involving in collaboration and joint initiatives for development activities and advo-cacy campaigns.**

N  
E  
T  
W  
O  
R  
K  
I  
N  
G  
  
P  
A  
R  
T  
N  
E  
R

## NATIONAL LABEL

1. Terre des hommes



**Terre des hommes**  
Helping children worldwide. [tdh.ch](http://tdh.ch)

2. CHILDLINE India Foundation



3. AII



**Alliance for Immunization in India**

## STATE LABEL

1. ATSEC



2. FORCESS

3. JAN ADHIKAR MANCH



4. JATN

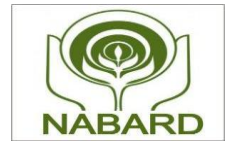
5. RIGHT TO FOOD CAMAPGIN



## MISSION PARTNER

MISSION PARTNER

NABARD



CHILDLINE India Foundation



JSLPS



CSWB



ITDA

DISTRICT SOCIAL WELFARE DEPARTMENT, PAKUR

SIMAVI

PHED ,PAKUR

JSWB

ITDA(sahibganj)

JSCPCS

## ORGANIZATIONAL INFORMATION

### JAN LOK KALYAN PARISHAD

#### Legal Status

Society registered under Societies Registration Act, 1860  
 Reg. No.790 Dated – 10.02.1994 (Patna)  
 PAN-AAAJ1889P  
 TAN- RCHJ01074D  
 80G-A/F  
 Registered under 12A of Income Tax Act, 1961  
 CIT/ DHN/TECH/12A/ 2006-07/1054-56  
 Registered under FCRA, 1976.  
 Reg. No. 337780012

#### Registered Office

At-Makhani, P.O-Taljhari, Dist-Sahibganj, State-Jharkhand,

#### Coordination Office

At-Sindhpara, P.O-Pakur, Dist-Pakur, State-Jharkhand, 816107  
 Phone-06435-220568  
 Mobile-9431158447, 9955148041  
 Email-janlok\_pkr@yahoo.com  
 Web.http://jlkp.org  
 Fax: 6435-220568

#### OUR BANKER

STATE BANK OF INDIA, Pakur

#### OUR AUDITOR

NDSKA & Associates, Patna

#### LINE OF MANAGEMENT

##### Chief Functionary

VINOD KUMAR PRAMANIK

##### Chairman

HARIHAR THAKUR

##### Secretary

SAROJ KUMAR JHA

##### Treasurer

RAHUL KUMAR PRAMANIK

##### Promoter 1

AJIT KUMAR THAKUR

##### Promoter 2

DOLI THAKUR

##### Promoter 3

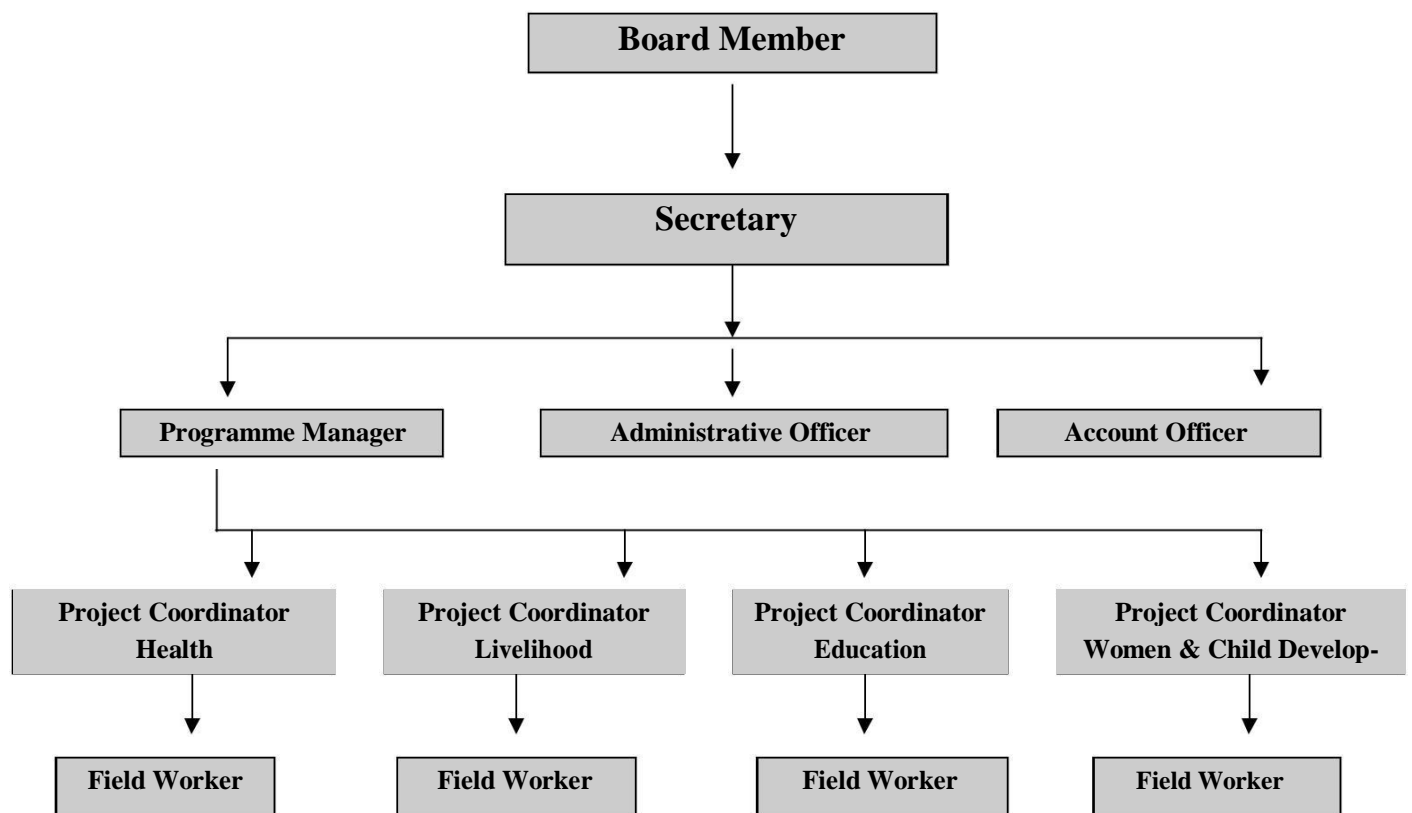
KAMLA GANGULY

##### Promoter 4

SANTOSH UPADHAYA



**Jan Lok Kalyan Parishad  
Working Structure**



## STAFF STRENGTH

CATEGORY	FULL TIME			EDUCA- TION	EXPERIENCE
	Male	Female	Total		
Management Staff	3	1	4	Post Graduate with professional skills	5 to 15 years experience in project management
Secretarial Staff	3	1	4	Post Graduate with professional skills	3 to 5 years experience in office management and secretarial job
Supervisory Staff	8	2	10	Post Graduates with professional training	5 to 8 years experience in supportive supervision
Field Workers	19	8	27	Matriculation to Graduate	3 to 5 years involvement in social animation and community mobilization



### TRAINING RECEIVED (TOT/MASTER TRAINER)

1. Moderation (Alternative development Jhansi M.p)/TOT
2. PRA (Alternative development Jhansi M.p)/TOT
3. Life skill (Prerna Delhi)
4. SHG's formation( Jslps)
5. Nukkar natak (Nector delhi)
6. SHG formation and Documentation (NEEDS)
7. Livelihood Promotion
8. RCH programme (NFI new delhi)
9. Leadership Development Training (NEEDS Deoghar)
10. Negotiation Skill Training.
11. Watershed development.(BABA AMTE LOKSASHAKTIKARAN DEBAS,MADHAY PRADESH THROUGH CAPART)
12. TOT on advocacy
13. Organising Development training (DFID)
14. HIV/AIDS (CDPA ranchi Jharkhand )
15. Training on Management on Camp School and Hostel.
16. MIS JSLPS , RICH INDIA
17. SHG FORMATION (NABARD)
18. MIS(NABARD)
19. Councelling (NPPCID)
20. Councelling Training(NIPPCID)

***THANK YOU***









