

**ANNUAL REPORT**  
**During the Period 2012-13**  
**Organization – JAN LOK KALYAN PARISHAD**



**OFFICE Address**

(01) Jan Lok Kalyan Parisad  
Near-Quarry association office  
Sindhipara pakur Jharkhand 816107

## **From secretary**

We are happy to present you the annual report of Jan Lok Lalyan Parisad for the year 2012-2013 during this year we received support and cooperation from various government departments, non government sectors, NEEDS (Sri M.M.chodhary), SRI(Dr.A.K Basu) , PRIA, and Sri Sudipto Banerjee),and local people, women group members youth clubs Adolescent of our area as well as the government organization, like DRDA Pakur, PHED Department of Sahibganj ,PHED Pakur ,CSWB Delhi ,JSWB Ranchi, MESO Pakur , Government of INDIA and International Funding Agency etc. It is for without their support the activities of this financial year would never have been completed.

Lastly I am indebted to all those people who have helped Jan Lok Kalyan Parisad through direct and indirect support .

Vinod ku. Pramanik  
Secretary  
Jan Lok Kalyan Parisad

## Introduction of JLKP

In 1989 ,two young persons from lalmati village Taljhari Block , Sahibganj District, Binod Kr. Parmanik and Shiv Charan Uraw formed a club by the name of Nehru yuva Club. The main motive of this club was to guide the youths ,specially tribals living below poverty line about their rights and obligations .

The club get registered in 1990. the villagers of lalmati cooperated with the club helping it to expand activities venturing in health and education . the villagers extended support in these activities and this encouraged the club to operate sewing centre . some keen women joined the sewing centre leading to socio economic development of the villagers . this encouraged club members to discus on the registration of the club . In 1992, sri Subhash Sharma, then district collector of pakur was impressed by the performance of the club encouraged club members for registration. The club was registered Under Society Registration Act 1860 in the name of Jan Lok Kalyan Parisad .

The members of the society decided to open a electronic center at pakur municipal area . The electronic center was inaugurated by present SDO of Pakur sri Premchand Choudhry .After a year BDO of Pakur visited the centre ,satisfied by the work gave the work of Training on electronic under TRYSEM . Gradually, society acquired efficiency in various trades like Motorcycle, Watch repairing, Making surf and soap, Leaf plate, Typing etc.

In 1997,District administration provided JLKP the opportunity to participate in the training on launching total literacy campaign in Pakur district . the president of the organization , Mr . Bhaskar Sarkar was appointed by district administration to head the total literacy campaign in the district . Contemporarily, he is continuing as secretary, heading the TLC in Pakur district .

Secretary of SRI Ranchi Dr. A.K. Basu selected the society as a good society in 2001 .From that period , Jan Lok Kalyan Parisad is active in changing the lives of people securing livelihood of rural and tribal Poor .

**VISION:-** Economically stabilized, educated healthy and just society.

**MISSION :-** To establish and sustain a trained conscious healthy as well as organized and self-dependent society through science and technology.

**Target community :-**

The organization aims at holistic development of tribal community with focus to women and children.

**The Focussed target community is given blow.**

- Santhal and pahariya tribal community.
- women and children's groups
- youth /beneficiary groups
- Adolescent Boy & girls
- Sathal farmers and agriculture labourer group.

### Programme priorities

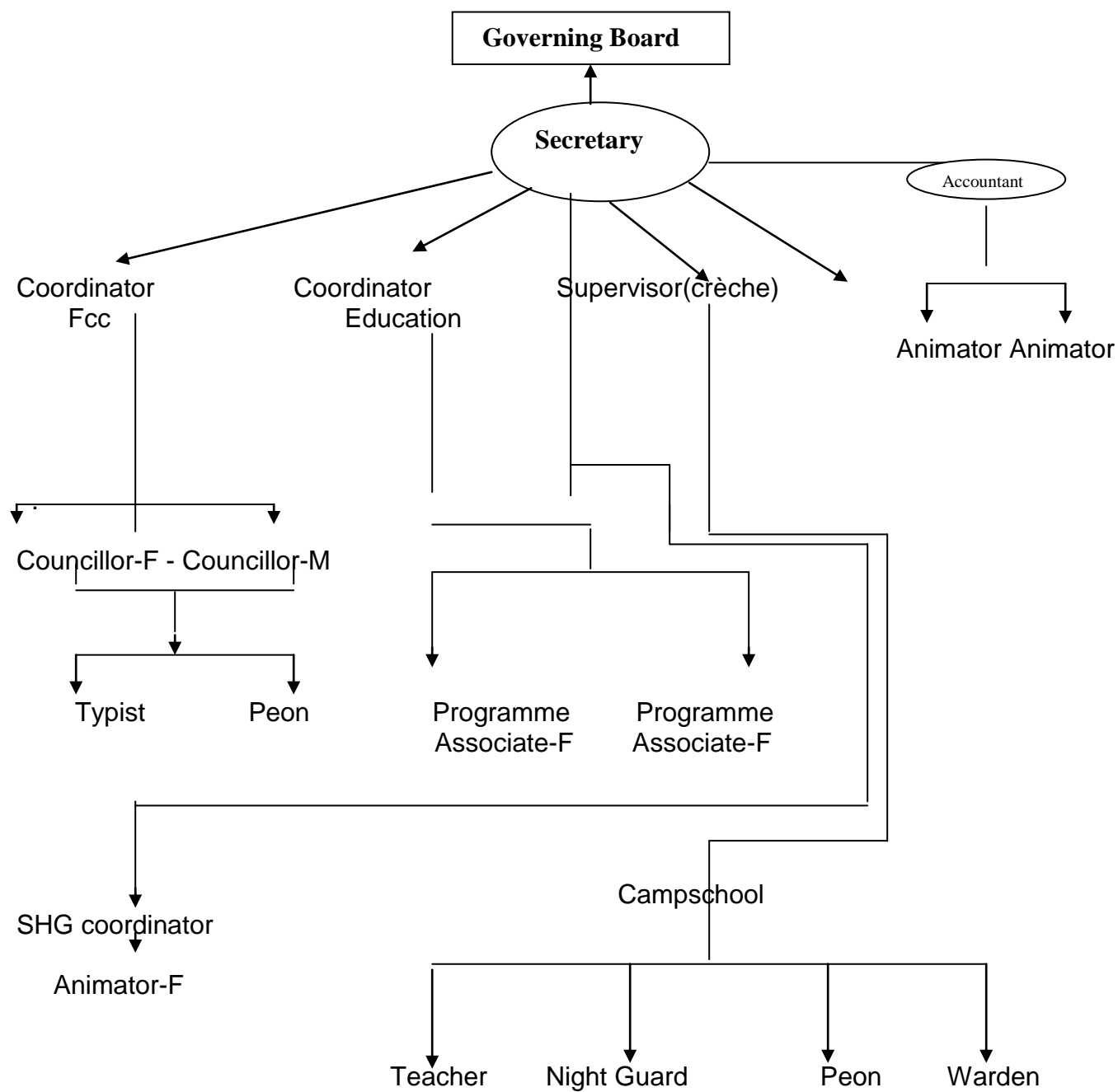
JLKP is a grass root level organization that primarily works on entitlement realization and women empowerment issues. It emphasizes on local governance, capacity building on RSH of young people .

This includes strengthening Gramsabha, facilitating linkages of local institution with Government services, building up capacity of traditional institutions, securing livelihood opportunities etc.

Governing Body

s.n	Name	Position	Education	sex
1	Sri Umakant Thakur	President	B.A	M
2	Mr Tanmay Mukarjee	Vise Persident	B.A	M
3	Sri Vinod kr, pramanik	Secretary	B.A	M
4	Sri Saroj Kumar Jha	Treasurer	B.A	M
5	Sri Basanti Hembrom	Co secretary	B.A	F
6	Smt.Kamlini Hemberom	Voice president	Matric	F
7	Smt. Rekha Rani	Member	Matric	F
8	Mr. sudipto Banarjee.	Co President	BA	M
9	Smt. Kamla Ganguli	Member	I.A	F

## Organization structure



## Training Received (TOT/Master trainer)

- Moderation (Alternative Development Jhansi M.P) TOT
- PRA (Alternative Development Jhansi M.P TOT
- Life skill (Prerna Delhi), TOT
- NuKKar Natak (Nector Delhi) TOT
- SHG formation and documentation .NEEDS
- Livelihood promotion
- RCH Programme (NFI new Delhi)
- Puppet making and Show (Nector Delhi) TOT
- Gender sensitisation (Navsristy Delhi)
- Leadership Development training (Needs Dewoghar)
- Negotiation skill training (Prerna Delhi)
- watershed development ( Baba Amte Loksashaktikaran Debas, Madhya Pradesh through Capart)
- TOT on Advocacy
- Organization development training through DFID
- HIV/AIDS form CDPA Ranchi Jharkhand
- Training on Management of Camp school and hostel facility.
- MIS JSLPS, RICH INDIA
- SHG Formation NABARD
- MIS NABARD
- Counseling –CSWB

Resources available within the organization

Organization has a cadre of trained staff who can train on the following .

S.n	Name of Resources	Subject(Issue)	Organization Experience
1	Ms.Rekha Rani	<ul style="list-style-type: none"> <li>• Life Skill</li> <li>• ARSH</li> <li>• RCH</li> <li>• Moderation</li> <li>• Nukkar Natak</li> <li>Team leader</li> <li>• Gender sensitisation</li> </ul>	4 Years
2	Ms.Kamlini Hembrome	<ul style="list-style-type: none"> <li>• ARSH</li> <li>• RCH</li> <li>• Strengthen of SHG and promotion of SHG .</li> <li>• Nukkar Natak &amp; team magment</li> </ul>	4 Years
3	Thomas Tudu	<ul style="list-style-type: none"> <li>• vermi compost</li> <li>• Got rearing and piggery</li> <li>• Strengthening of local</li> <li>• Governance</li> <li>• System of Rice identification</li> </ul>	4 Years

4	Vinod kumar pramanik Head of the organization	<ul style="list-style-type: none"> <li>• PRA (participatory Rural Approach</li> <li>• Moderation</li> <li>• PRI)</li> <li>• SHG</li> <li>• Local Governance</li> <li>• Gender sensitisation</li> <li>• watershed development</li> <li>• Sustainable Livelihood promotion</li> </ul>	14 years
5	Ms. Babli sinha	<ul style="list-style-type: none"> <li>• Gender sensitisation</li> <li>• Family cancelling</li> </ul>	5 year
6	Vinod kumar pramanik	HIV/AIDS form CDPA Ranchi Jharkhand	14 year
7	Chavi kumari and Mr. Davichadn murmur	<ul style="list-style-type: none"> <li>• Training on Management of Camp school and hostel Facility as well as enjoy full education system.</li> <li>• Strengthen and promotion of SHG .</li> </ul>	5 year
8	Nirola soren	<ul style="list-style-type: none"> <li>• Bamboo craft and basket, chatay making</li> </ul>	5 year

## PROGRAMMES

This is Properly on going project for the complete livelihood and income generation for the sustainable livelihood promotion .

1-Prototype Yojna in MESO Project – In this project the organization has got watershed/ water harvesting programme and Goat Rearing in 43 villages of 20 panchayat in pakur district .Under this project the organization has made 1 Dug wells and 7 low land well ,2 lift for irrigation of barren fields . the organization has also done 4 land and 240 beneficiary selected in this project . this project is give a batter opportunity for ST population, for better and sustainable livelihood promotion.



A photographs of lift irrigation and distribution programme of vermy compost under MESO Project .



2-Education programme (This is a continuation programme.

(a) Operating 2 girl camp school in litipara block,of Pakur District

(b) Operating 2 Boys camp Arohan school at chapadanga pakur block pakur district for migrating children.

Two girls camp school and 2 boys camp school is being operated by Jan Lok Kalyan Parishad from January 2007 .100 non school going girl children aged 9 to 14 years are given residential coaching through this camp school. At most all the girls and boys come from primitive tribal groups (pahariya ) .who never had the opportunity to see a train . they are also the first generation learners as 90% of the children's belong to parents who are illiterate.



Photographs of Independence day ( camp school Rodgo village of littipara Block Pakur district )

### 3-Awareness programme on environment .

The organization has successfully done the awareness programme on environment support by ministry of environment government of India . the theme of the programme was solid waste management. under this awareness programme 30 wells were cleaned ,16 tube wells were cleaned and training was imparted to the village youth and women folk on vermycompost .



#### **4- village resources centre**

The organization is running a village resources center supported by IASRO Benglor ,in this resource center the villagers are imparted training on different activities on agriculture ,bamboo works ,handicrafts ,etc . there is a programme to connect this center with telemedicine tele education etc, in near future .

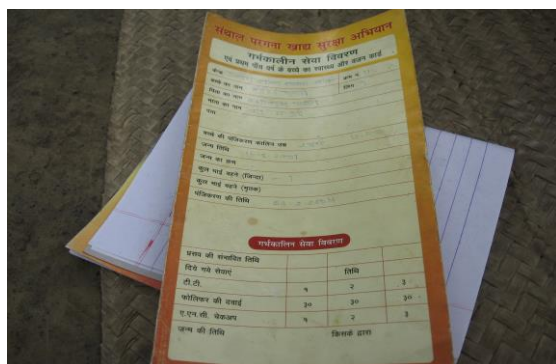


**VRC center at littipara block Pakur of district**

#### **5-Food security(Grain bank operating through FRG) this is a continuation programme , in littipara block of ,Pakr district.**

In this programme the organization imparts training to women groups to put brake on distress selling at village level. Total seven groups were trained in this programme. One group was selected as a model named MAHILA KALYAN SAMITY at Jhena Gariya village, Block: Litti Para. We facilitated a group consisting of 15 women members. They got 12 quintal Food grains & Rs. 36,000/- cash from us. They collected the food grains from their self-help group members on a daily basis and provided the Mid-Day meal to the poor children (4 – 10 Years). They are also working with the Growth-Monitoring program with the targeted children and keeping the records. The group has helped two-selected poor family continued who had no access to any government schemes and food security programme . The group has supported these two families by providing them 10 and 35 kg foodgrain to support their livelihood. They also supplied 'garib sahayata card' to these two families to access foodgrains from them at a

much lower rate to PDS(6 Rs. Per kg). this is on going activity through participation of SHG Member , as well as they are sensitive health programme



The Programme replicated through other three SHGs at Litipara Block, Pakur district. They are take all responsibility .

## 6- Self-help Group Formation: (This is a continuation programme) through JLKP members and other volunteer contribution .

We have formed 15 new SHGs in different Block of Pakur District. Among them, we have linked 35 groups with Bank. They have already started the Self-lending process to increase their own fund as well as government lone under SGSY , and working for social welfare and self-income generation programme for sustainable livelihood in their villages. Mainly SHG members are the tribals from Santhal and pahariya community of Litipara Block Pakur district. They are already form last year, a block level SHG federation for self help and other awareness activity .



## 7-Family Counselling Centre: (This is a continuation programme, support with central government of India .

The organization is running a Family Counselling Centre in Pakur headquarters to resolve dispute of family for the last 5 years with the financial assistance from Central Social Welfare Board, New Delhi. This year, we have already helped 65 married victims. In three cases, after

withdrawal of cases from the Court, we helped the women to rehabilitate and settle with their husbands and family .



#### **8- Creche: (This is a continuation programme)**

We are maintaining a crèche centre in the village Binjha, Littipara block of Pakur district with the financing support from JSWB. In this program about 50 poor children are provided nutrition food grains and medicine support . this year we have already helped 25 , 0 to 6 year children's for better nutrition and education facility for help of her parents and JSWB Jharkhand .



**A photography of crèche center .(Health care -up programme )**

#### **9-Strengthening of local governance programme . (This is a continuation programme)**

Under this programme Two new tribal villages were selected for awareness building on local self governance. The gramshva members were made aware of rights of citizens in gramshaba in the light of 73and 72 Constitution Amendment and PESA(panchayt Extension to scheduled area Act). Encouraging women's participation in gramshaba meeting was one of the major component of the awareness building programme. As a follow up, three villages have internalised the concept and acting for the realization of local self governance

Training to youth and traditional head man on local self governance .  
05 youth and 2 village head man from litipara block participated in the capacity building event organized that aimed to sensitise them on access to development schemes. This event incapacitated participants to know about government schemes and interact with the government.  
to access development schemes.



## 11- Gender sensitisation (This is a continuation programme of JLKP)

10 old group leaders of 30 SHGs and 15 new SHG and adolescent group were oriented on gender based issues like discrimination by broth ,social responsibility and expectation from boy and girl separately. It was expected that women will learn about gender discrimination and try to abolish this beginning from their own home and neighbourhood .these participants went back in their groups and trained them . subsequently, it was visible that the girl children out of school were sent to school .



**11 - Health programme (this is a follow up programme at littipara block ) this is continuation programme .**

### (a) Mother and New Borne care (MNH)

One day Training to adolescent group sexual health .  
We formed 52 adolescent boy and girl club consisting of 717 members . JLKP provided training to 10 boy and 10 girls group leaders in this year ,on Sexual health issue. This group

trained the others members of the group and other adolescent of the village in turn . this is a fallow up programme .



## 12- PROJECT TITLE – FINANCIAL INCLUSION IN PAKUR

Pakur district is one of the 11 most backward in Jharkhand (one of the UNDAF states) and figures in the list of 100 most backward districts in India. It also figures in the list of 90 Minority concentration Districts (MCDs) prepared by the Ministry of Minority Affairs, GOI on the basis of the 2001 census data on population, socio-economic indicators and basic amenities indicators. Through a joint initiative between State Level Rural Livelihood Promotion Society (JSLPS), established by government of Jharkhand, and UNDP, Pakur has been selected as one of the 5 districts for the financial inclusion program. It is also noteworthy that as per the guidelines and parameters of Reserve Bank of India (RBI), Pakur district has been declared as 100% financially included, but the field realities clearly depict that rural poor at large and people living in the remote areas are in need of livelihood opportunities, regularize financial services and life sustaining amenities essential for quality productivity.

Funding partner – JSLPS (Jharkhand state livelihood promotion society)

Goals and objectives – Within the poverty reduction thematic area in Pakur district,

JLKP is one of the implementing partners of UNDP's Financial Inclusion project who is working with the state governments to facilitate the design and implementation of pro-poor and inclusive livelihood promotion strategies. The focus is on excluded groups such as women, Schedule Castes (SCs), Scheduled Tribes (STs), Minorities, below-the-poverty line and migrant households and involuntarily displaced people. Recognizing that access to financial services is a crucial element of livelihood promotion, financial inclusion is an important component of the programme.

Operational areas – 9 (Nine) remote and backward villages of Littipara Block of Pakur District is selected namely Bara sarsa, Kamalghati, Jitpur, Chota sarsa, Kukurduba, Phulpahari, Dopahari, Patrapara and Jirli



## Women and child protection

### PROJECT TITLE – CHILDLINE

CHILDLINE is a 24-hour free toll free-help-line and outreach service for children in need of care and protection that links children to a long-term services. It is a project of the Ministry of Women and Child Development, Government of India. This service has been started in all the six blocks of Pakur district. Our organization served as a collaborative organization for this Child help line Service in Pakur district. We are in the second year of serving the CHILDLINE service in Pakur District. Through out the year we have taken a total of 364 numbers of child cases of different category like missing children, child in need of medical treatment, child trafficking, child abuses etc. this year we have also activate the child help line toll free number 1098 in Pakur block of Pakur district at our Childline collaborative center at Pakur.

Funding partner – Childline India Foundation, Mumbai.

Operational areas – All the 6 (Six) Block of Pakur district in Jharkhand state.

Considering the major challenges issues in implementation of CHILDLINE in Pakur district, and hard to reach geographical locations, the CHILDLINE rural model structure is functioning in our area. i.e CHILDLINE Nodal and Collaborative centre are in Pakur city, two Sub Centres are in Littipara Block, two Sub Centres are in Mahespur Block, one Sub Centre is in Amrapara Block and one Sub Centre is in Pakuriya Block.



Photo description - Childline Pakur collaborative organization's team members.

#### **14-Training to adolescent groups on health and hygiene**

The adolescent girls became aware of the health and hygiene during menstrual period, irregular periods, changes in the body during this period .

#### **15-Reproductive child health**

Training to SHG leaders on safe sex and child health care

30 SHG members were trained on safe sex and child health care. The participants went in their groups and trained them. The purpose of the training was to make the people aware of transferable diseases like AIDS , sexual diseases, the measures to be taken to prevent them that generally occurs when people migrate.

#### **16- RCH intervention**

- Capacity building of Traditional dai on safe delivery practices this is a continuation programme as per field requirement.
- Capacity building of SHG member on Immunization.
- Training to pregnant women's on prenatal care in the age group 19-25 years.

#### **17- Others activity**

- Vermin compost training programme.
- Agriculture training programme .
- Livelihood programme .
- Promotion of Culture and sports programme ,for girls and boy etc.



**A Photographs of Vermin compost training programme**

**Jan lok kalyan parishad honoured to express the gratitude to all the partners in effort towards our development during 2012-13:**

**All our formed CBOs**

**All our Partner NGOs**

**ATSEC, Jharkhand chapter**

**(CSWB) Central social welfare board**

**(CIF) Childline India Foundation, Kolkata**

**(DRDA) District Rural Development Authority, Pakur**

**(DST) Department of science and technology**  
**(D.W) Department of Welfare, Pakur**  
**D.W & S.M , Pakur, D.W & S.M Sahebganj**  
**I.T.D.A, Pakur**  
**(JEPC) Jharkhand Education Project council, Ranchi**  
**(JSLPS) Jharkhand State Livelihood Promotion Society**  
**(JSWB) Jharkhand social welfare board.**  
**MESO, Pakur**  
**Ministry of Women and child development, New Delhi**  
**(NABARD), Ranchi**  
**NEEDS, Deoghar**  
**Pakur District Authority**  
**Pakur Municipal Department.**  
**Pakur Police department**  
**(UNDP) United Nation Development Programme**

**Secretary**  
**JAN LOK KALYAN PARISAD**